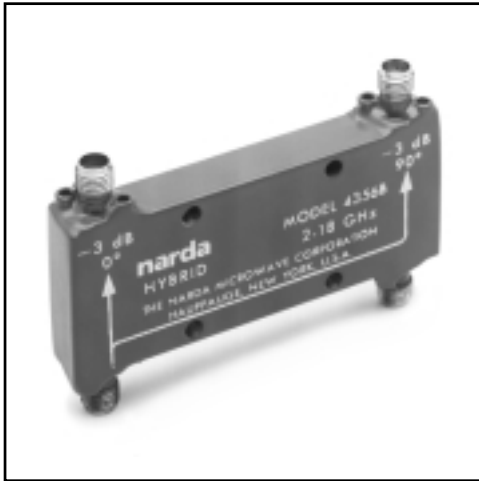


Power Dividers and Hybrids



2-18 GHz

ULTRA-BROADBAND 180° HYBRID AND 90° HYBRID

- Smallest Size and Weight
- Multi-Octave Bandwidth
- Excellent Phase Balance
- Low VSWR
- High Isolation
- Rigid Construction Resists Shock & Vibration
- Operational to 105°C without Degradation (125°C Storage)

SPECIFICATIONS

180° Hybrid

FREQUENCY RANGE GHz	MODEL	COUPLING (Nominal) dB	VSWR (Max)	INSERTION LOSS (Max)		ISOLATION dB (Min)	AMP BAL dB	PHASE BAL Degrees		POWER		WEIGHT	
				2-8 GHz	8-18 GHz			2-8 GHz	8-18 GHz	Avg Watts	Peak kW	Oz	Gr
2-18	4346	3.0	1.6:1	2.30	18	±0.8	15	12	30 W	3 kW	2.89	82	

CONNECTORS: SMA

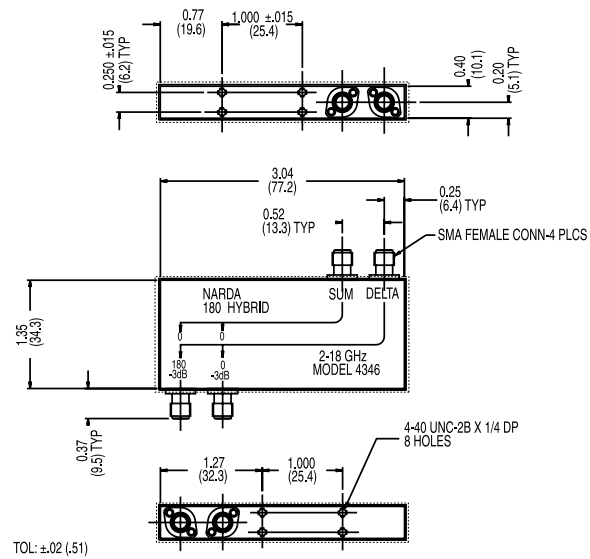
90° Hybrid

FREQUENCY RANGE GHz	MODEL	VSWR (Max)	INSERTION LOSS (Max)		ISOLATION dB (Min)		AMP BAL dB	PHASE BAL Degrees	POWER		WEIGHT	
			2-8 GHz	8-18 GHz	2-8 GHz	8-18 GHz			Avg Watts	Peak kW	Oz	Gr
2-18	4356E	1.5:1	0.6	1.0	20	17	±0.75	7	30	3	2.3	65

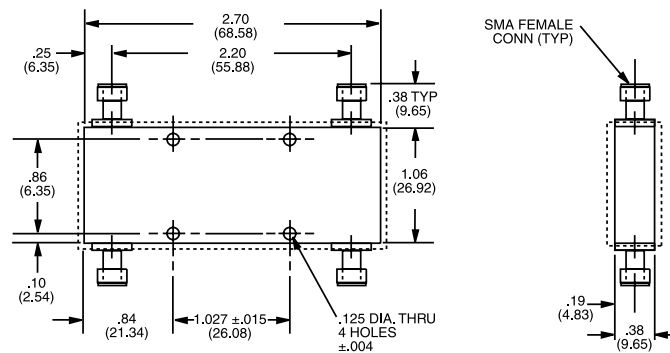
CONNECTORS: SMA

Power Dividers and Hybrids

OUTLINE DRAWINGS



MODEL 4346



MODEL 4356B

Dimensions in parentheses are in millimeters and for reference only.

Allow .020 for Sealant Buildup per Surface